






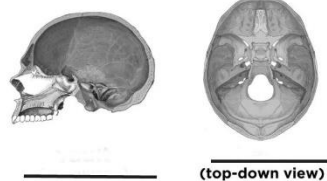


The Skeleton open web student test Professor Dave explains The Skeletal System  
<https://www.youtube.com/watch?v=f-FF7Qigd3U&t=118s>  
 Go to this link pause and fill in the answers to the student test attachments  
 Thank you Professor Dave... show support and subscribe.

 <div data-bbox="462 367 803 640"> <p><b>The Skeletal System</b></p> <p><b>bones</b> ( in an adult)</p> <p>_____</p> <p>_____</p> <p>_____</p> <p>(totals to % of body mass)</p> </div>	 <div data-bbox="982 367 1339 640"> <p><b>The Skeletal System</b></p> <p><b>axial bones</b></p> <p>_____</p> <p>_____</p> <p>_____</p> <p>_____</p> </div>
 <div data-bbox="503 745 860 1039"> <p><b>The Skeletal System</b></p> <p>_____</p> <p>_____</p> <p>_____ <b>bones</b></p> </div>	 <div data-bbox="1047 745 1383 1039"> <p><b>The Skeletal System</b></p> <p><b>_____ bones</b></p> <p>_____</p> </div>

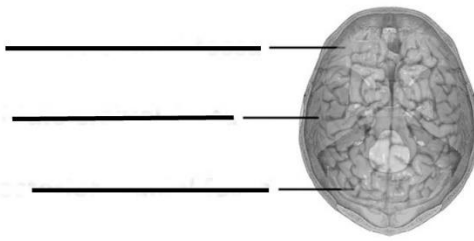
go to this link for answers <https://www.youtube.com/watch?v=f-FF7Qigd3U&t=106s>  
 you can make copies and write the missing info in and put them in your notebook

page 1

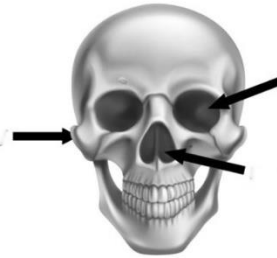
<p>the skull contains ____ bones</p> 	 <p>_____ bones</p> <p>_____ bones</p>
<p>the skull contains mainly ____ bones</p> 	<p>the cranium consists of a ____ and a ____</p>  <p>(top-down view)</p>

page 2

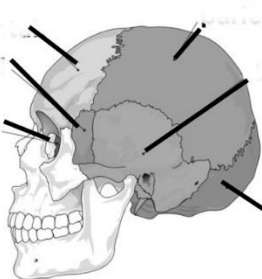
the base is divided into \_\_\_\_\_



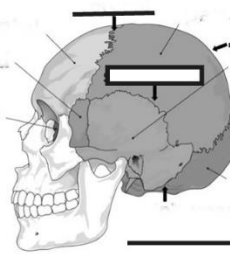
there are other \_\_\_\_\_ as well



these produce the  
( \_\_\_\_\_ )



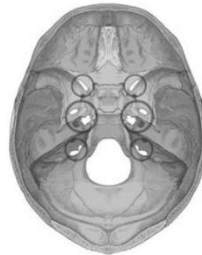
there are \_\_\_\_\_ cranial bones



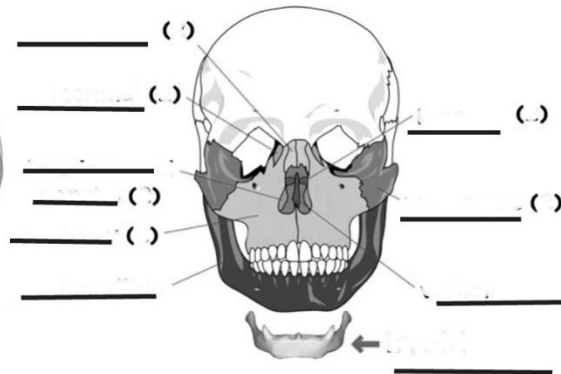
these are connected by \_\_\_\_\_

page 3

\_\_\_\_\_ that nerves  
and arteries and  
veins pass through



there are \_\_\_\_\_



## The \_\_\_\_\_ System

\_\_\_\_\_ bones  
found in the \_\_\_\_\_ and \_\_\_\_\_



structure of the \_\_\_\_\_



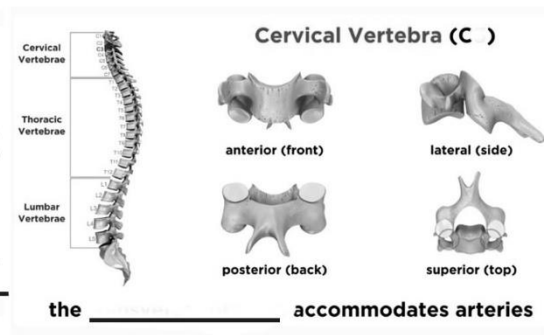
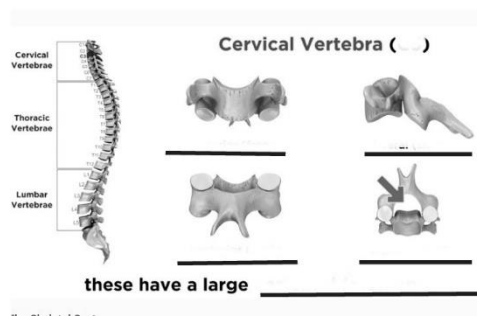
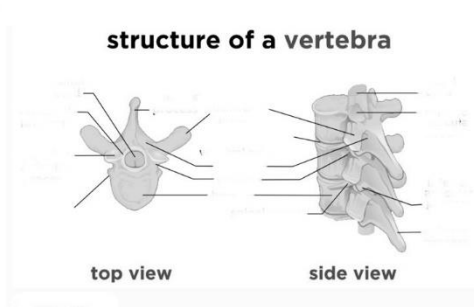
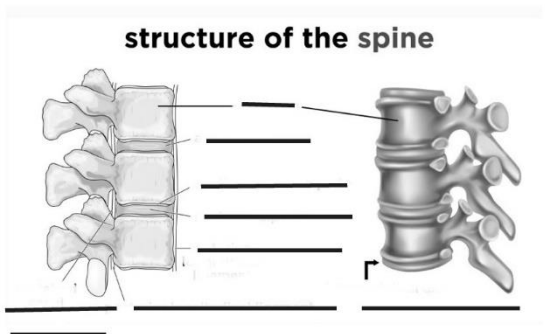
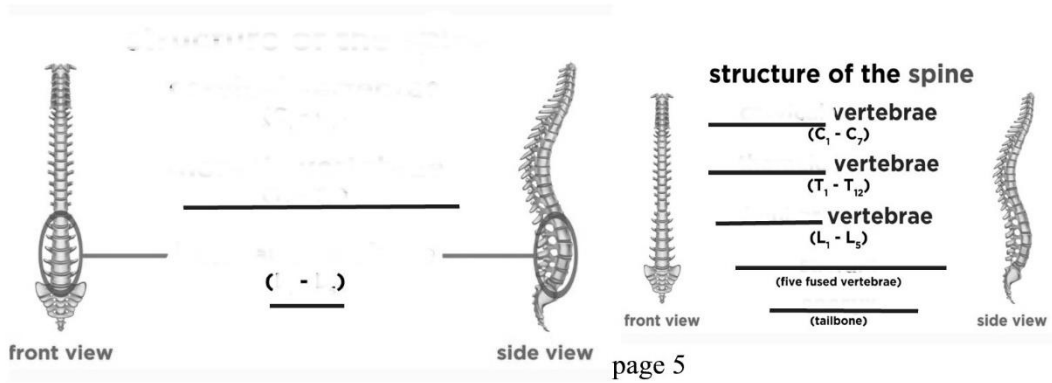
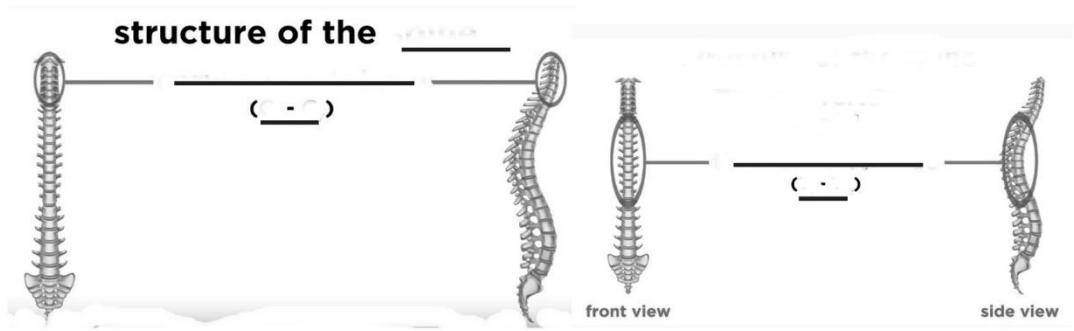
front view

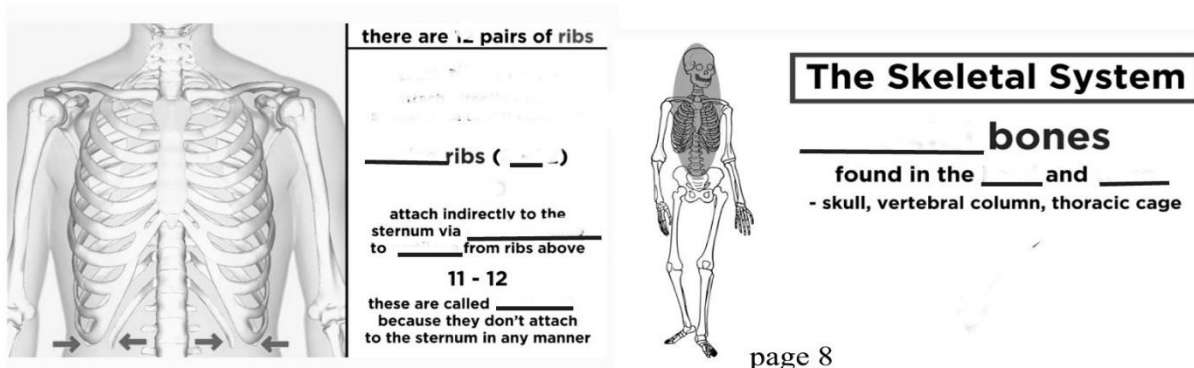
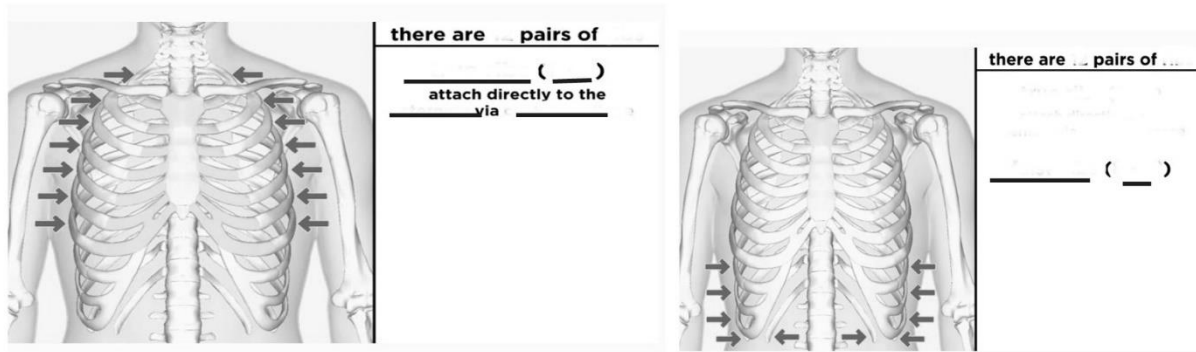
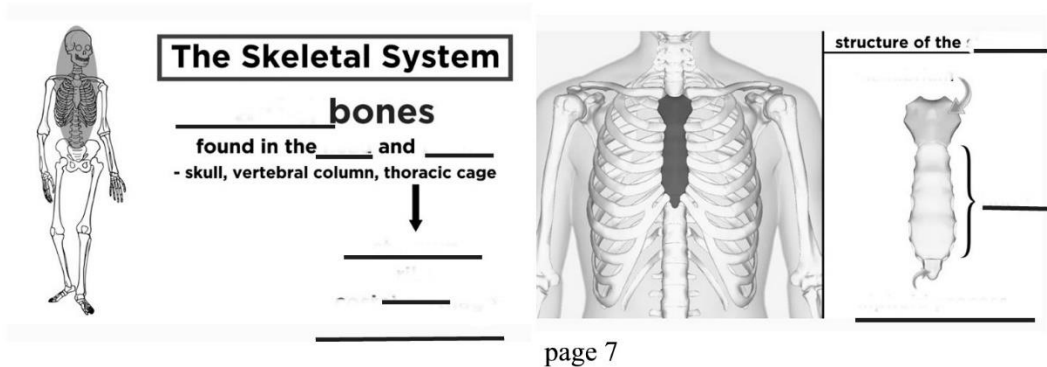
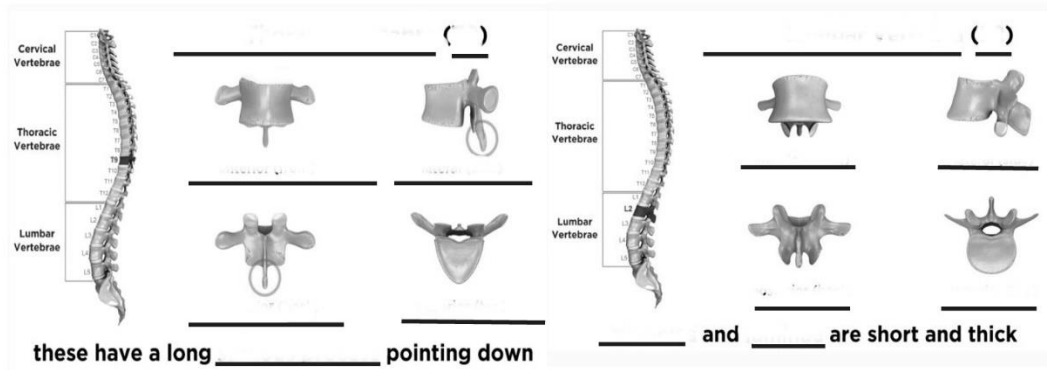
\_\_\_\_\_ bones  
that form an \_\_\_\_\_



side view

page 4



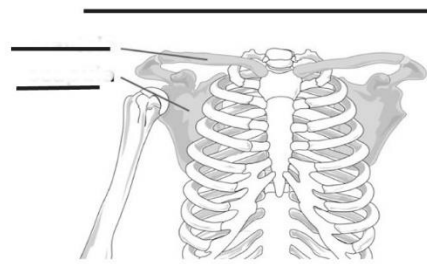




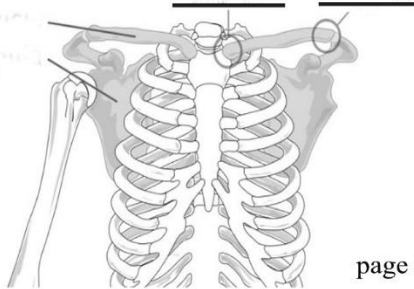
## The Skeletal System

\_\_\_\_\_ bones  
found in the \_\_\_\_\_ and \_\_\_\_\_

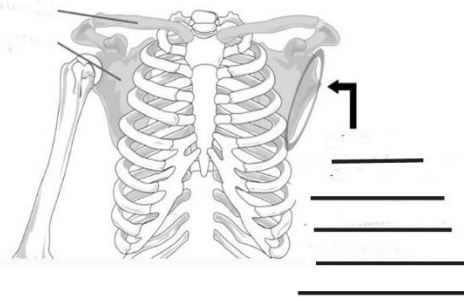
\_\_\_\_\_ bones  
found in the \_\_\_\_\_  
- arms and legs, pelvis, shoulders



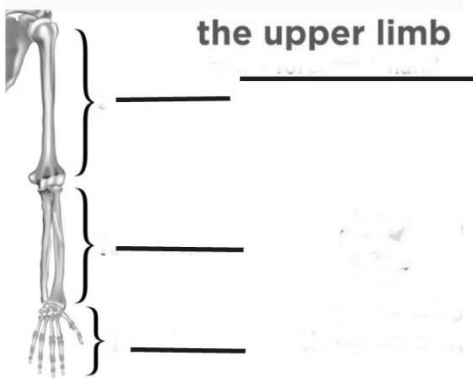
attaches the upper limbs to the axial skeleton



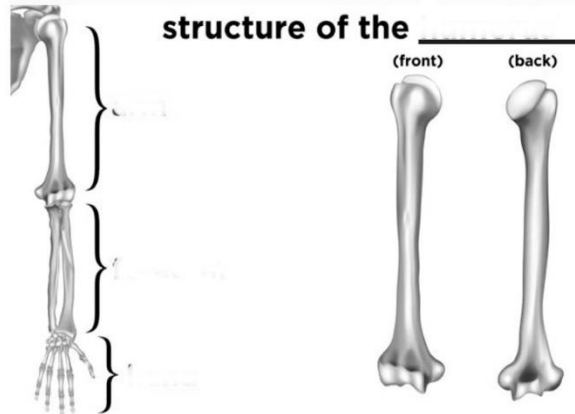
attaches the \_\_\_\_\_ to the \_\_\_\_\_



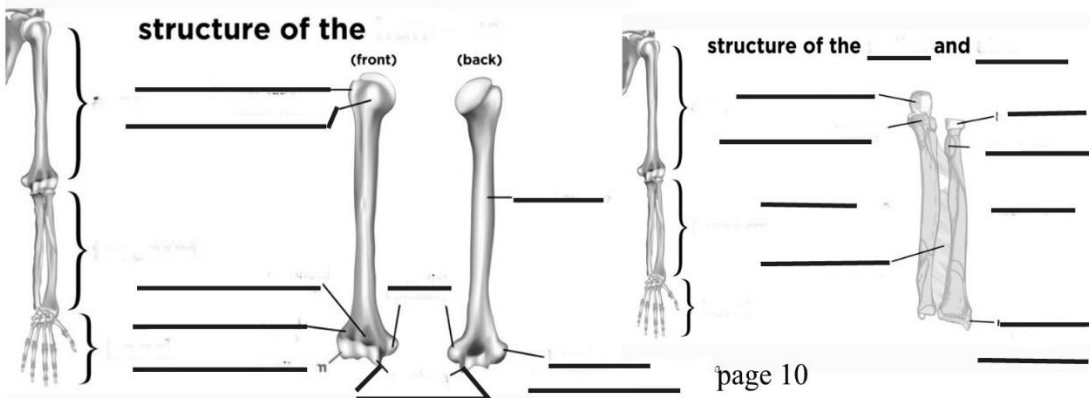
page 9



the upper limb

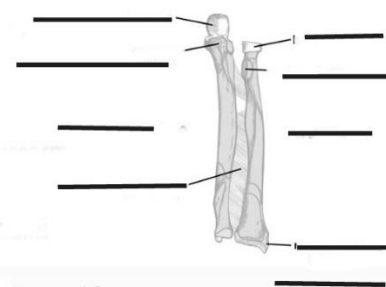


structure of the \_\_\_\_\_



structure of the \_\_\_\_\_

structure of the \_\_\_\_\_ and \_\_\_\_\_



page 10

